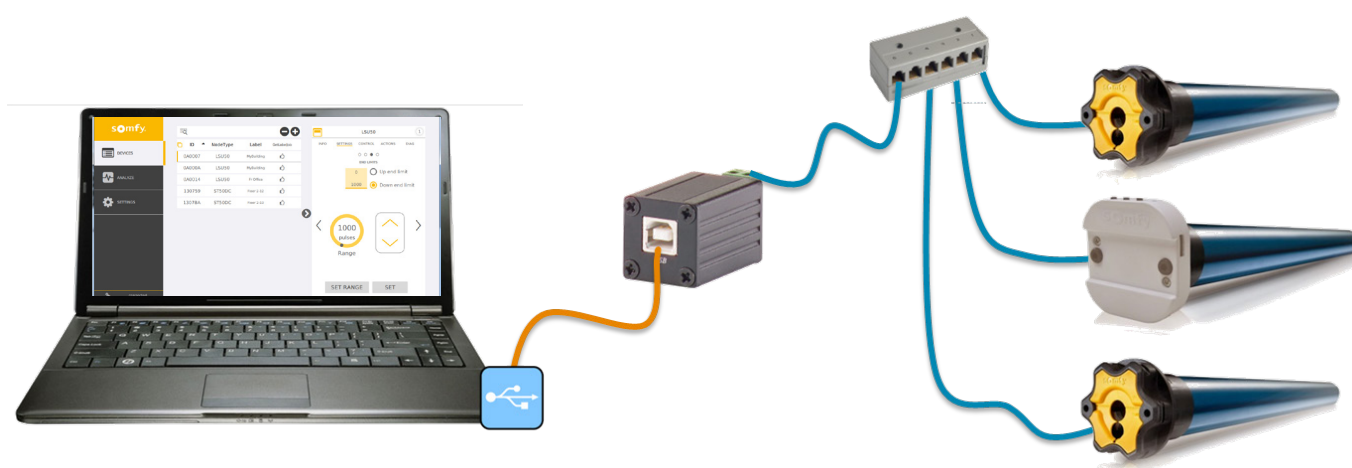


Quick Start for SDN Configuration Tool

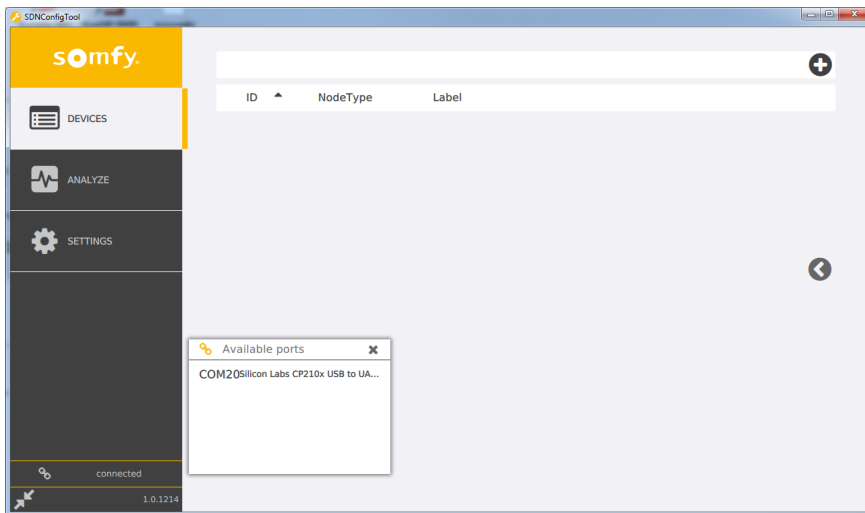
Ref. 5 126 174



Requirements

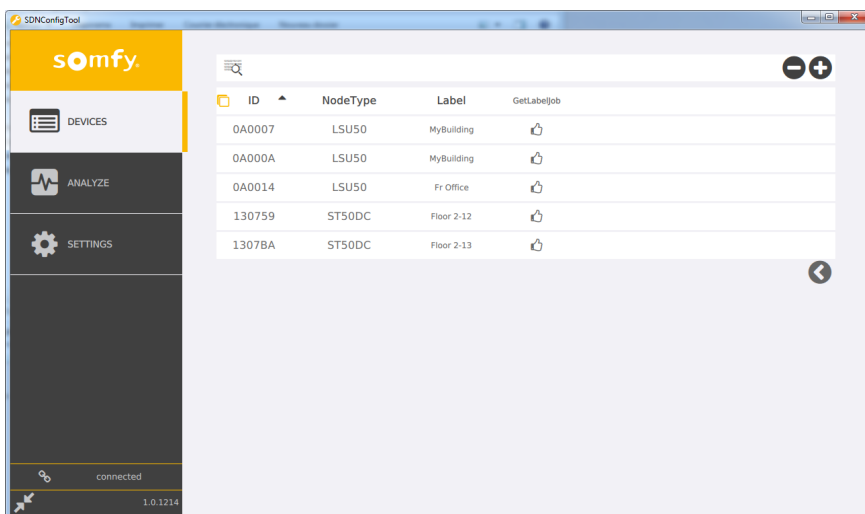
The basic requirements for the SDN Configuration Tool are as follows:

- > Windows 7 PC with SDN Configuration Tool installed
- > Motors connected through an RS485 USB interface



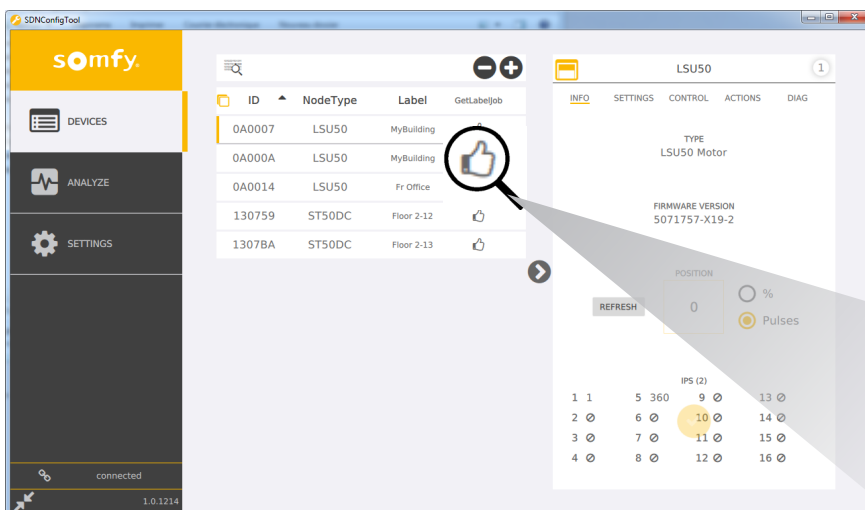
1. CONNECTION

- > Open the SDN Configuration Tool after having installed it
- > Click on «not connected»
- > Select the port to connect
- > You are now connected



2. DEVICES

- > Click on Discover or to manually add motors
- > Select the motor(s) you want
- > Use CTRL to select several motors.
- > Click on a node type to select all motors types of the list (the software will automatically select all corresponding motors)



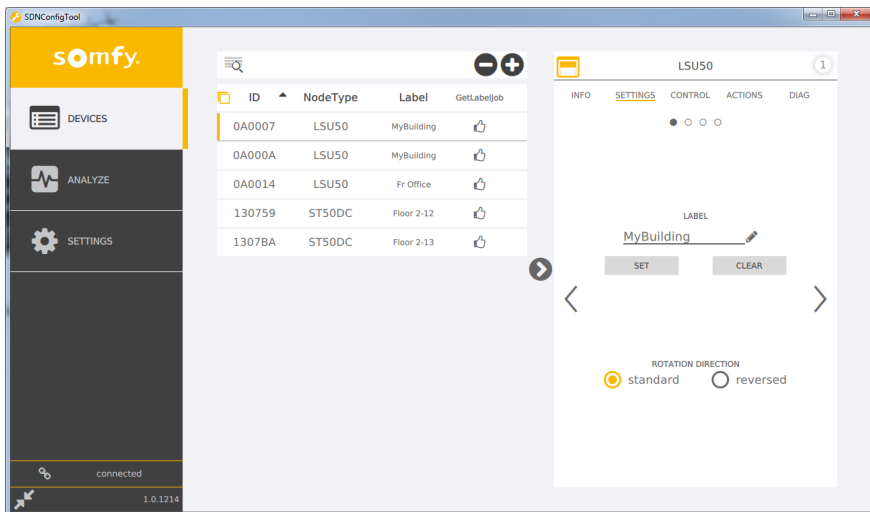
2.1 INFO

- > Firmware version
- > Current position
- > Intermediate positions (IPS)

Important!

On every action you make, check the result thanks to the the feedback information :

- : Positive feedback
- : Negative feedback
- : Error (mouse over for details)



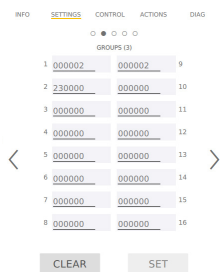
2.2 SETTINGS

> Rename each motor to identify them easily

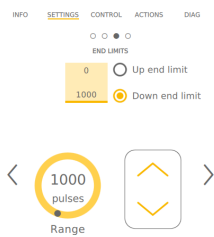
> Change the rotation direction

! According to the motor type, the settings possibilities can be different.

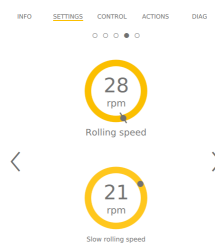
And also...



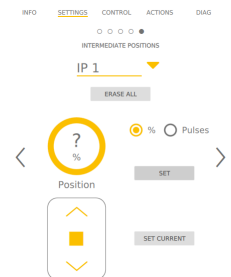
> Set groups



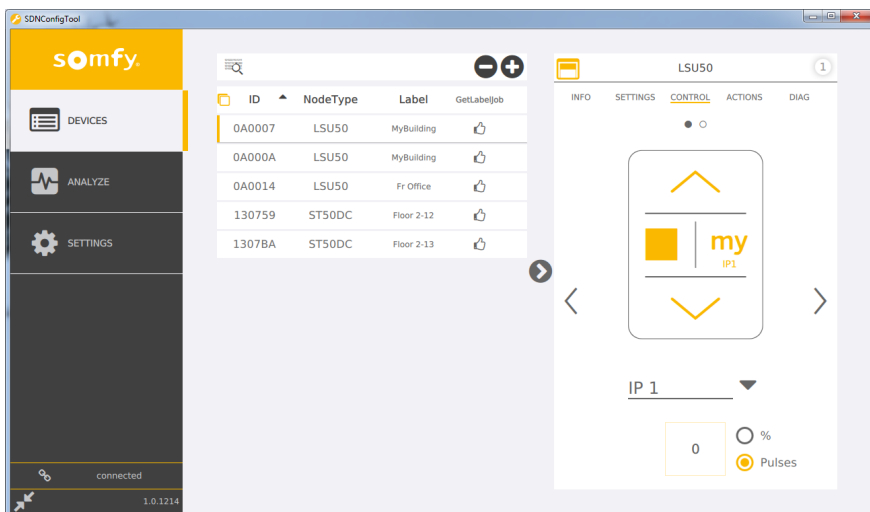
> Set up & down end-limits



> Set rolling speeds



> Set Intermediate position
in % or pulses

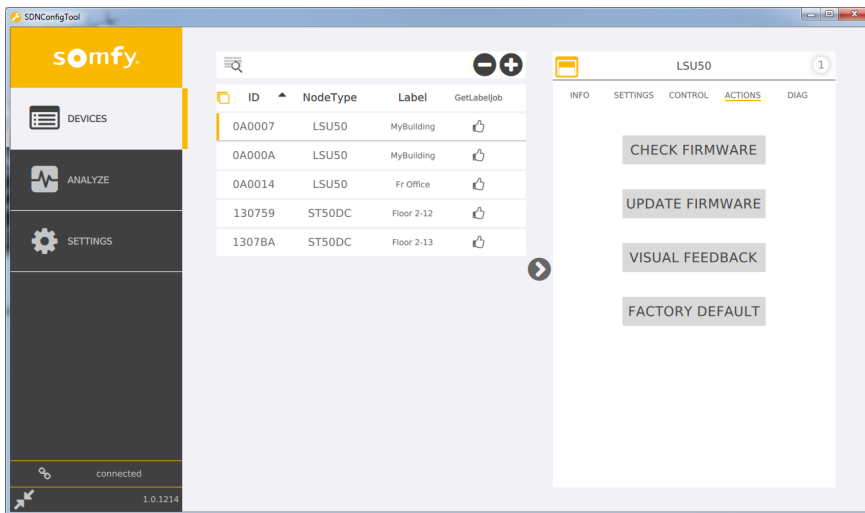


2.3 CONTROL

> Control your motor(s) (up/down/stom/my: favourite position) and Intermediate Positions in % or pulses.

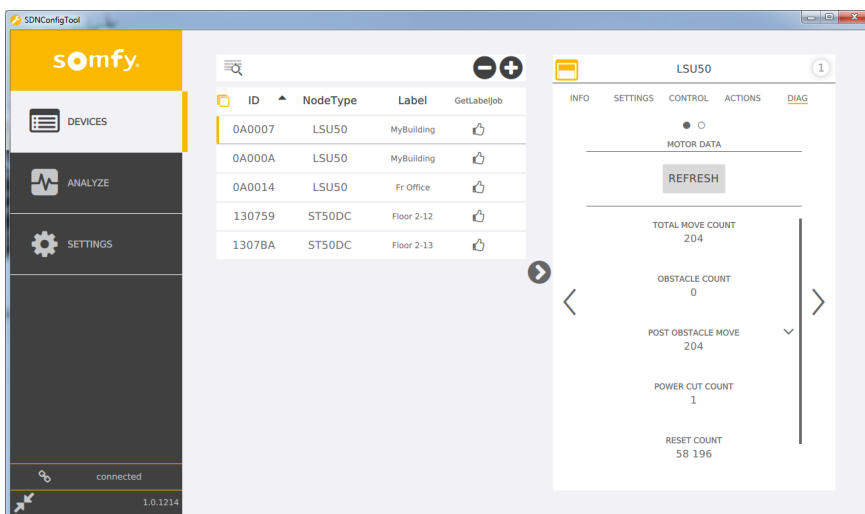
> Go directly to a desired position in %

> Go to the next Intermediate position



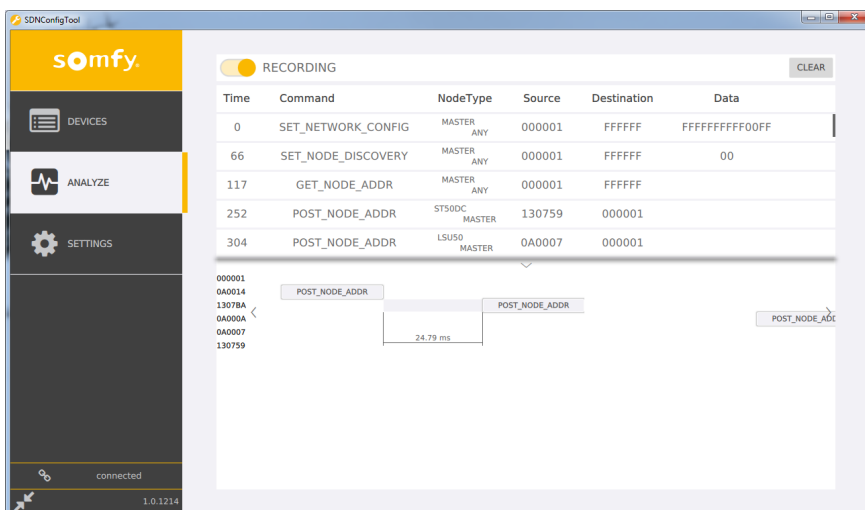
2.4 ACTION

- > Update firmware version
- > Wink motor (visual feedback)
- > Reset motor to factory default settings



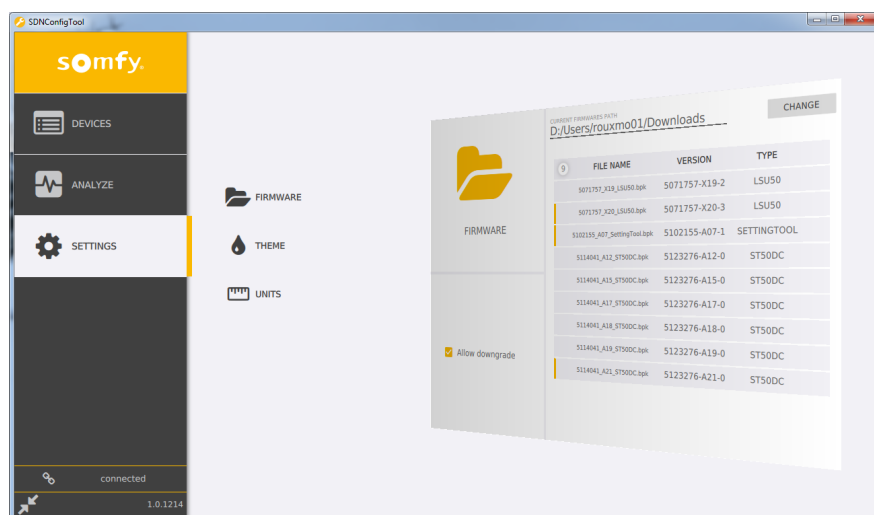
2.5 DIAG

- > Allows to display the datas linked to the motor functioning records.



3 ANALYZE

- > Allows to visualize and record the communication datas on the SDN network.



4. SETTINGS

- > Select SETTINGS
- > FIRMWARE
- > Select the folder on your computer where the firmware are located.
- > This is automatically the latest firmware which will be used for the firmware update.

And also:

- > Select your preferred unit to display by default in the application
- > Select the color theme

Somfy

50 Avenue du Nouveau Monde
74300 Cluses Cedex
France

T +33 (0)4 50 96 70 00

F +33 (0)4 50 96 71 89

www.somfyarchitecture.com

www.somfy.com