

# See shade in a new light

animeo IB+ TouchBuco™

The intuitive control interface  
*for small and medium-sized  
buildings*





So that everyone  
can freely control  
the role of natural light  
in their living and  
working environment.

4	ANIMEO IB+ TOUCHBUCO™	16	SOMFY AT YOUR SIDE
6	THE ADVANTAGES FOR	18	PRODUCT PAGES
6	Occupants	20	TouchBuco™ & accessories
8	Building managers	22	Sensors & accessories
10	Installers	27	Motor Controllers & accessories
12	SYSTEM ARCHITECTURE	29	User controls
14	ENERGY BENEFITS		



Whatever the latitude or season, **controlling light and heat while preserving natural resources is an essential human need.** This is the same at home, at work, at school, at the hospital and wherever buildings accommodate human activities.



**That is why we create the means to control the solar protection of buildings,** ensuring the well-being of those who live there paying constant attention to energy performance.



We support the needs of facility management **by providing connected solutions, accessible on-site or remotely.**



**We allow everyone to determine their own thermal and visual comfort:** a simple movement is enough to control natural light, modulate heat and ensure privacy.



By creating solutions in the service of the users, **we contribute to improving efficiency at work as well as the quality of care and learning, thereby contributing to better health.**



In association with those who design, build and manage buildings, and together with our solar protection partners, **we provide open and scalable solutions that meet all energy performance and comfort needs.**



# animeo IB+ TouchBuco™

Conceived to control the solar protection systems in small and medium-sized buildings, animeo IB+ TouchBuco™ is the automation solution which can be configured for each zone, quickly and easily.

With animeo IB+ TouchBuco™, users create dedicated scenarios for 1 to 8 zones.

Results: optimal visual and thermal comfort for the occupant and optimization of energy performance in the building.

## Which communication technologies?



**Wired technology:** to control all blinds (interior, exterior) fitted with wired Somfy motors.



**Radio Technology Somfy® (RTS):** The addition of radio modules (RTS cards) makes it possible to control blinds with remote controls or RTS wall-mounted controls. Wireless technology is ideal for renovations and allows you to position or move control points without wiring issues.

Now integrate TouchBuco with building management systems over BACnet.





## Enrich

with functions  
and advanced services



Remote management  
and preventive maintenance



Somfy's remote and real-time  
support and troubleshooting service

## Automate

your façades with  
animeo IB+ TouchBuco™



Motor Controllers



Wired or radio  
user controls



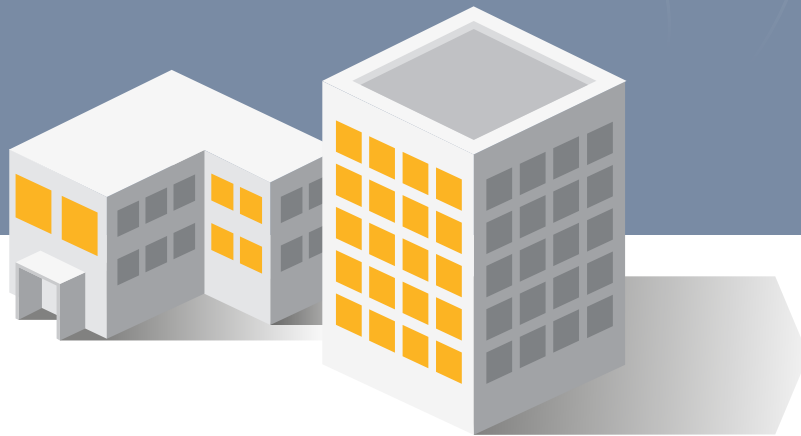
Weather Stations  
M8 & M13

## Motorize

all solar shading




animeo IB+ TouchBuco™  
including BACnet integration



The solar shading control solution  
for small and medium-sized buildings

animeo IB+ TouchBuco™

The intuitive touch screen solution for dynamic  
solar shading, now with 



# The **advantages** for occupants







## ENJOY automatic control of blinds to work better

Thanks to the automatic control of blinds, **animeo IB+ TouchBuco™** frees occupants from managing the brightness in their space by offering them a better quality of life and the ability to concentrate better at work.

“ No more need to worry about manual blinds! With automatic control, the light is always optimally managed, which has significantly improved our conditions for learning and teaching.



## TAKE BACK CONTROL to suit the occupant's needs

The occupant can take back control at any time. **animeo IB+ TouchBuco™** offers a wide range of remote controls or wall-mounted control points.

“ The advantage: the option to save a favorite position for blinds (MY position) and activate it with a specific button.



# The **advantages** for building managers

## EFFECTIVELY SUPERVISE AND CONTROL *installations*

The intuitive **animeo IB+ TouchBuco™** touch screen interface enables users to monitor and control the status of installations, define the different levels of access and make adjustments to building zones.

“ I manage several buildings.  
I need a simple and secure monitoring tool  
which remains restricted to users  
whose access rights I have personally defined.





## RECONFIGURE products easily

Easily repair RTS user controls and motor zones without having to access the motor or installation's wiring.

“ I want to be able to reorganize the user controls for occupants without having to contact a professional to change the wiring.



## GET A REMOTE DIAGNOSTIC REPORT and proactive assistance

Remotely diagnose the status and running history of products, and identify the nature of the fault, in order to better prepare an intervention.

“ If there is an incident, my installer or the dedicated teams can now assist me remotely to provide faster and more efficient support.





# The **advantages** for installers

*DON'T MISS  
any deals*

With its 4 control modes, including energy, comfort & security features, and a wide range of accessories such as sensors or timers, **animeo IB+ TouchBuco™** meets all installation requirements.

“ *No two projects are alike. We need a solution that adapts to the weather conditions and meets the needs of project requirements.* ”





## INSTALL in assisted mode

Thanks to its integrated setup wizard, the interface offers step-by-step guidance at each stage of the installation. From the allocation to the commissioning of blinds in each zone, **animeo IB+ TouchBuco** makes installation manageable so users can work in peace.

“ I want to be able to devote myself to my clients, and not to deciphering a complex interface. With **animeo IB+ TouchBuco™** to guide me through the installation, it's fast and fluid.

## OFFER a remote diagnostic service

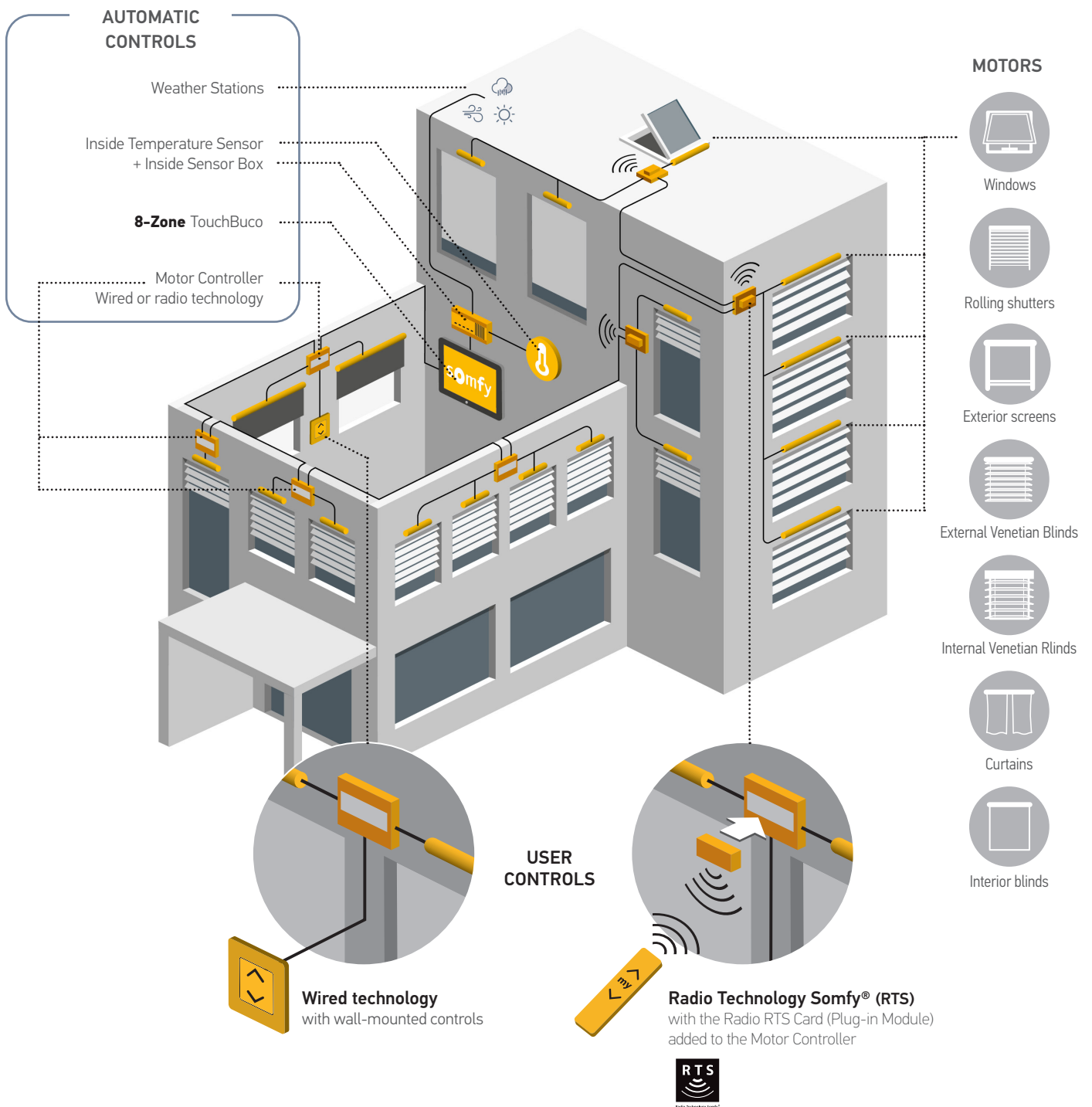
Change settings, activate controls, update firmware, etc. The remote management of **animeo IB+ TouchBuco™** allows performing various maintenance or troubleshooting operations in order to minimize activity on site.

“ Without remote maintenance, I would spend my time having to go out on site. Now I can concentrate only on troubleshooting that requires my presence.



# System architecture

A solution adapted to the uses of buildings

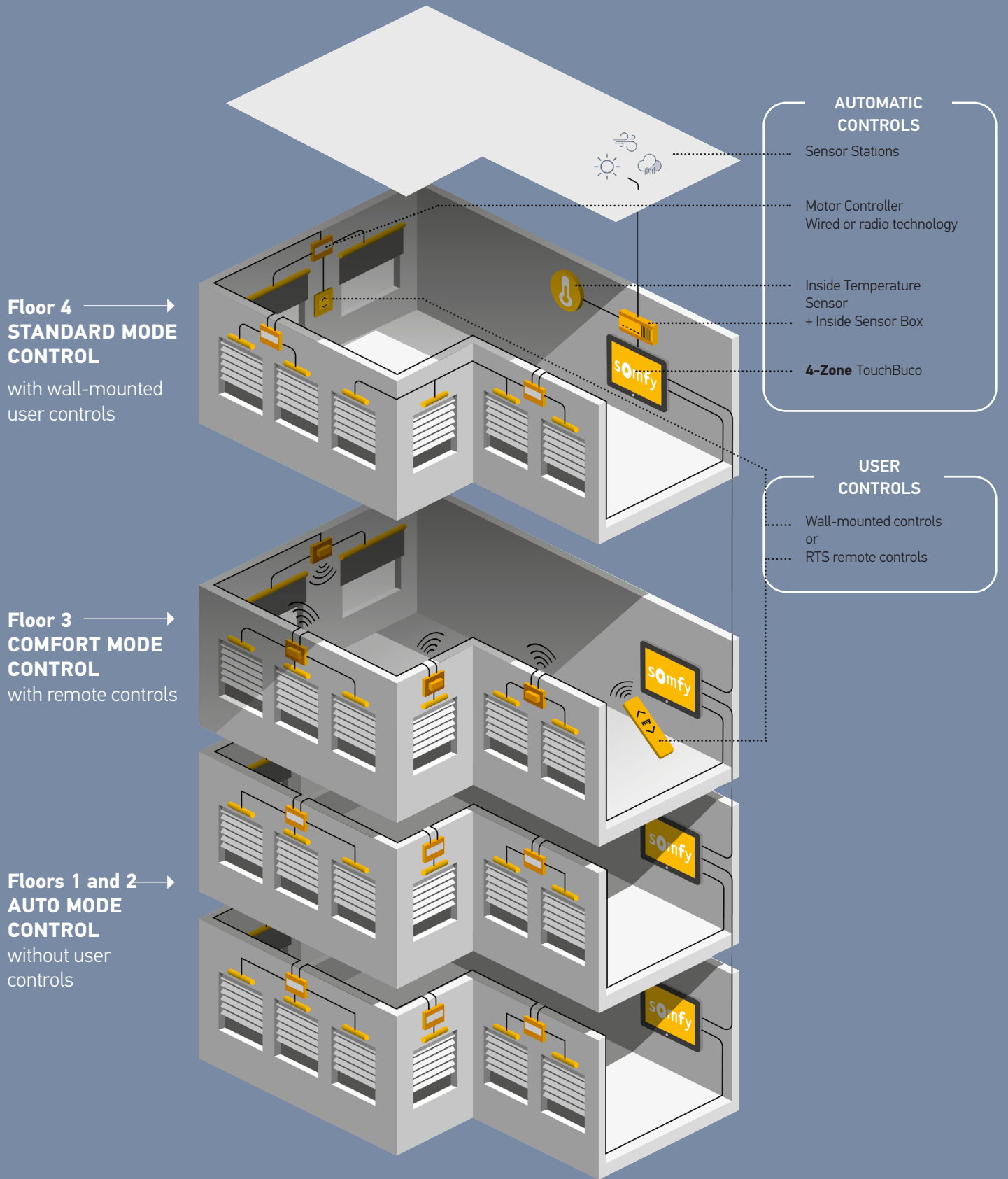


1

MANAGEMENT OF A SINGLE-OWNER BUILDING

**1 x 8-Zone TouchBuco** for a whole building, to control **up to 8** different zones





2

MANAGEMENT OF A MULTI-OWNER BUILDING

1 x 4-Zone TouchBuco per floor, to independently control each co-owned lot

# Satisfy occupants while **reducing** energy costs

Capturing natural light reduces the use of artificial light, heating and air conditioning. In addition to the comfort of the occupant, animeo IB+ TouchBuco™ provides a comprehensive and lasting solution to the challenges of saving energy.

## GOOD TO KNOW

**Buildings are responsible for approximately 40 % of the energy consumption in the European Union. An automated blind management solution can reduce a bill for heating and air conditioning by up to 70 % while improving well-being and productivity.**







## 4 control methods to meet all expectations

and to make it possible to switch from fully automated to complete autonomy for the occupant.

From fully automated...

... to autonomy for the occupant.

Feedback through BACnet



Priority of features per mode	AUTO MODE	STANDARD MODE	MANUAL MODE	COMFORT MODE
	<i>100 % automated system to maximize energy savings</i>	<i>A good balance between energy savings and the comfort of the occupant</i>	<i>Priority to the needs of the occupant, while retaining energy features</i>	<i>Full autonomy to occupants</i>
SAFETY FEATURES	Priority <b>1</b>	Priority <b>1</b>	Priority <b>1</b>	Priority <b>1</b>
ENERGY FEATURES	Priority <b>2</b>	Priority <b>2</b>	Priority <b>2</b>	Not active
SUN FEATURES	Priority <b>3</b>	Priority <b>3</b>	Priority <b>3</b>	Priority <b>2</b>
LOCAL CONTROL	Not active	Active <i>Without priority</i>	Active <i>Override the sun and energy features until reset to automatic</i>	Active <i>Override the sun features until reset to automatic</i>



With integration over BACnet, shading and building management systems can work seamlessly together.



Option to select several modes depending on the presence or absence of the occupants in the building.



**Somfy**  
at your side

**Enjoy**  
the technical  
expertise and  
know-how  
of Somfy's  
teams

Whatever the needs and the complexity of the project, we are able to offer an optimal automated solar protection solution for your building, whether it is new or being renovated. If you have any questions about managing your solar protection systems, please contact us. In terms of our building management products, we have designed a whole series of services to help you, including post-installation maintenance contracts. We also offer a consultancy service (drawings, wiring plans, planning) during the initial stages of the project, when the installation takes place or for the maintenance of the system.

**Through our products and our services, and by our presence at your side, we strive to improve the living and working environment, in particular in offices, schools, health establishments and homes.**



## Your partner at each stage of the project



### Planning



- > Project planning needs
- > Production of 3D models and plans
- > Assistance during project meetings

The Somfy technical teams are at your service to assist you during the meetings before the project begins, and in the presence of other consultants and experts, to meet the specific needs of each project.



### Installation



- > Help with installation
- > System integration
- > Commissioning

During the installation stage, we are available to provide you with different types of materials and services to suit your needs.



### Maintenance



- > Maintenance support
- > On-site troubleshooting
- > System optimization

In order to extend the life of the system installed and ensure optimal performance, complete maintenance is necessary. We adapt our services to your needs.



# Product **Pages**







## TOUCHBUCO & ACCESSORIES

p. 20 - 21



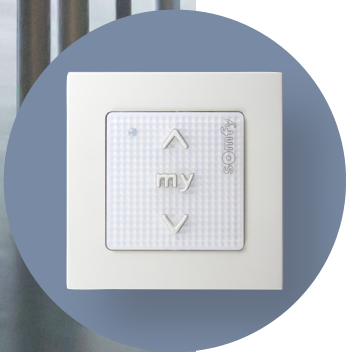
## SENSORS & ACCESSORIES

p. 22 - 26



## MOTOR CONTROLLERS & ACCESSORIES

p. 27 - 28



## USER CONTROLS

p. 29 - 30



# TOUCHBUCO & ACCESSORIES

- 21 TouchBuco BACnet 4-Zone
- 21 TouchBuco BACnet 8-Zone
- 21 RS485 Sensor Hub
- 21 Surface Mounting Box TouchBuco
- 21 Flush Mounting Box TouchBuco



## ■ TouchBuco BACnet

**Standard:** Ref. 1860254 (4 Zone), 1860255 (8 Zone),

**BACnet:** Ref. 1860308 (4 Zone), 1860309 (8 Zone)

Central unit designed for solar shading and window automation to control up to 4 or 8 individual façade orientations of a building. Capacitive seven inch user touch screen providing a wide range of useful functions optimizing the building performance. 4 or 8 Zone TouchBuco incorporating the connection to a Building Management System.



Dimensions	200 x 132 x 72 mm
Power supply	100-230V AC
Mounting	Wall or flush-mounted

## ■ RS485 Sensor Hub

Ref. 9018147

An accessory to connect more than 5 TouchBuco on a single Outside Sensor Box. Necessary every 5th TouchBuco on the bus sensor.

Requires 24V DC power supply (9017611).

Dimensions	72 x 122 x 35 mm
Power supply	24V
Mounting	DIN-Rail



## ■ Surface Mounting Box TouchBuco

Ref. 9019838

Allows installation of the 4 or 8-Zone TouchBuco on a wall.

Must be used with the Flush Mounting Box TouchBuco.

Dimensions	254 x 180 x 90 mm
Mounting	Surface-mounted



## ■ Flush Mounting Box TouchBuco

Ref. 9019837

Allows installation of the 4 or 8-Zone TouchBuco in a wall or door of an electrical cabinet.

Dimensions	192 x 119 x 68 mm
Mounting	Flush-mounted





# SENSORS & ACCESSORIES

- |    |                                   |    |   |
|----|-----------------------------------|----|---|
| 23 | Outside Temperature Sensor        | 25 | Power Supply DRM 24 V DC 1.5A           |
| 23 | Sun Sensor + Mounting Bracket Kit | 25 | Inside Temperature Sensor               |
| 23 | Ondeis® Rain Sensor               | 25 | Housing for Inside Temperature Sensor   |
| 23 | Wind Speed Sensor                 | 25 | Inside Sensor Box                       |
| 24 | Heated Wind Sensor                | 26 | M8 Weather Station                      |
| 24 | Wind Direction Sensor             | 26 | M13 Weather Station                     |
| 24 | Outside Sensor Box                | 26 | Metallic Mast for Weather Station (Kit) |
| 24 | Sensor Station Mast               | 26 | M-Series Weather Station Wall Bracket   |

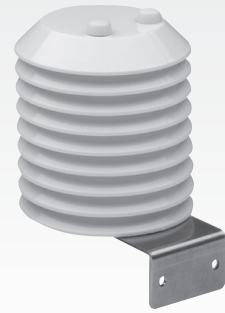


## ■ Outside Temperature Sensor

Ref. 9001611

*Measures the external temperature.  
To be used with the Outside Sensor Box.*

Dimensions	H 150 mm / Ø 115 mm
Power supply	N/A
Mounting	N/A



## ■ Sun Sensor + Mounting Bracket Kit

Ref. 9154043

*Kit including a Sun Sensor and its Mounting Bracket.*

Dimensions	34 x 88 x 47 mm
Power supply	N/A
Mounting	Dedicated mounting bracket included



## ■ Ondeis® Rain Sensor

Ref. 9016344

*Capacitive sensor to measure precipitation.  
To be used in conjunction with the Outside Sensor Box.*

Dimensions	115 x 100 x 85 mm
Power supply	24V DC
Mounting	Wall-mounted



## ■ Wind Speed Sensor

Ref. 9001608

*Measures wind speed in connection with the Outside Sensor Box.*

Dimensions	H 200 mm / Ø 240 mm
Power supply	N/A (dry contact)
Mounting	On a mast





## ■ Heated Wind Sensor

Ref. 9140180

Measures the wind speed in conjunction with the Outside Sensor Box. Integrated heating device to avoid freezing of the sensor. Requires an external 24V power supply.

Dimensions	H 200 mm / Ø 240 mm
Power supply	24V AC/DC
Mounting	On a mast



## ■ Wind Direction Sensor

Ref. 9013807

Measures the wind direction in connection with the Outside Sensor Box to take the exact geographical façade orientations into account.

Dimensions	303 x 515 x 48 mm
Power supply	N/A
Mounting	On a mast



## ■ Outside Sensor Box

Ref. 9001606/9001607 (extension)

Interface to connect the sensors to the TouchBuco. Requires a 24V DC power supply.

Dimensions	207 x 255 x 90 mm
Power supply	24V DC
Mounting	Wall-mounted



## ■ Sensor Station Mast

Ref. 9013726

Sensor Station including 1 Outside Sensor Box, 4 sun sensors, 1 wind sensor and 1 exterior temperature sensor, attached to an aluminium mast.

Dimensions	3200 mm
Power supply	N/A
Mounting	Wall (brackets included)





## ■ Power Supply DRM 24V DC 1.5 A

Ref. 9017611

*Provides power to the Outside Sensors (without heated sensors) and RS485 Sensor Hub.*

Dimensions	78 x 93 x 56 mm
Power supply	100 - 240V AC
Mounting	DIN-rail



## ■ Inside Temperature Sensor

Ref. 9008044

*Measures the inside temperature to manage the building's energy.*

Power supply	N/A
Mounting	In a dedicated housing



## ■ Housing for the Inside Temperature Sensor

Ref. 9008045

*For surface mounting the Inside Temperature Sensor.*

Dimensions	75 x 75 x 25 mm
Power supply	N/A
Mounting	Wall-mounted

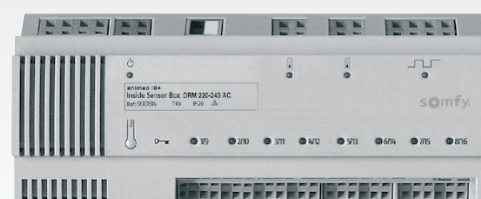


## ■ Inside Sensor Box

Ref. 9001615 (120V AC)

*Connects 8 zone controls, either key controls for locking or standard switches to control zones (up/down). Can connect 2 Inside Temperature Sensors.*

Dimensions	210 x 90 x 61 mm
Power supply	120V AC
Mounting	DIN-rail





## Weather Station M8

Ref. 1860306

*Weather station including 8 sensors (4 sun sensors, 1 wind speed, 1 rain, 1 temperature sensor and 1 date/time).*

Dimensions	105 x 103 mm
Power supply	24 V
Mounting	Wall or mast-mounted



## Weather Station M13

Ref. 1860307

*Weather station including 13 sensors (8 sun sensors, 1 wind speed, 1 wind direction, 1 rain, 1 temperature sensor and 1 date/time).*

Dimensions	105 x 103 mm
Power supply	24 V
Mounting	Wall or mast-mounted

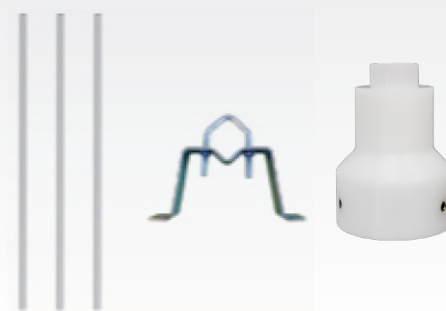


## Metallic Mast for Weather Station (Kit)

Ref. 9027035

*Kit including 3 metallic pieces of 1 meter each, a wall mount bracket and a Mast Adaptor to fix the weather station M8 or M13 on a wall.*

Dimensions	H90 mm Diam / Ø 25/50 mm
Mounting	On a mast

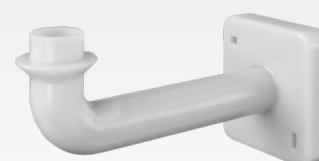


## M-Series Weather Station Wall Bracket

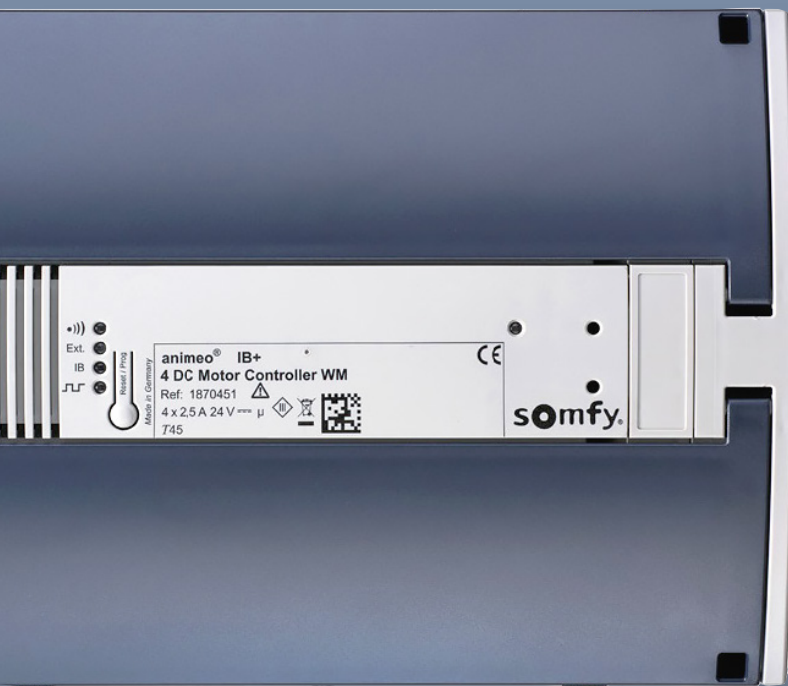
Ref. 1860320

*Accessory to mount the Weather Station M8 or M13.*

Dimensions	180 x 80 x 80 mm
Mounting	Wall-mounted







# MOTOR CONTROLLERS & ACCESSORIES

- 28 IB+ 4 AC Motor Controller WM
- 28 IB+ 4 DC Motor Controller WM
- 28 IB+ 1 Output Converter
- 28 Switch Zone Splitter

## ■ IB+ 4 AC Motor Controller WM

Ref. 1860080 (120V AC)

Motor controller to individually control **four 120V AC motors** with a local control or the control of a group of motors via automation.

Dimensions	255 x 180 x 61 mm
Power supply	120V AC
Mounting	Wall-mounted



## ■ IB+ 4 DC Motor Controller WM

Ref. 1870451

Motor controller to individually control **four 24V DC motors** with a local control or the control of a group of motors via automation. Requires an external 24V DC power supply.

Dimensions	255 x 180 x 61 mm
Power supply	24V DC
Mounting	Wall-mounted



## ■ IB+ Output Converter

Ref. 1860125 (WM)

Provides **one potential free output** for individual control of a potential free input motor or a control via local push button.

Dimensions	90 x 180 x 45 mm
Power supply	100-230V AC
Mounting	DIN-rail



## ■ Switch Zone Splitter

Ref. 1810392

To create sub-groups in the same IB+ zone.

Dimensions	80 x 80 x 52 mm
Power supply	N/A
Mounting	Wall-mounted







# USER CONTROLS

- 30 Smoove Origin IB
- 30 Radio RTS Card (Plug-in Module)
- 30 Smoove 1 RTS
- 30 Situo 1 & Situo 5 RTS
- 30 Situo 5 Variation RTS

# USER CONTROLS

## ■ Smoove Origin IB

Ref. 1811272

Wall control by central IB bus line to have individual, grouped or overall control of several motors.

Dimensions	71 x 71 x 44 mm
Power supply	24V DC
Mounting	Wall-mounted



## ■ Radio RTS Card (Plug-in Module)

Ref. 1860105

Receiver to control 4 AC, 4 DC or 4 DC/DC-E Motor Controllers by RTS radio with RTS radio local controls. Clips directly into the Motor Controller.

Dimensions	52 x 92 x 27 mm
Power supply	5V DC
Mounting	Clips into the Motor Controller



## ■ Smoove 1 RTS

Ref. 1811533 (Pure)

1 channel wireless wall-mounted radio control to have individual, grouped or general control of several motors via the RTS radio receiver card.

Dimensions	50 x 50 x 10 mm
Power supply	Battery powered
Mounting	Wall-mounted



## ■ Situo 1 & Situo 5 RTS

**Situo® 1 RTS:**

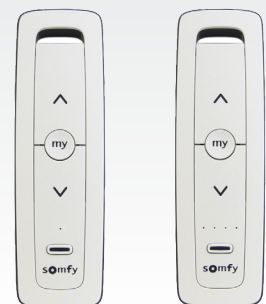
Ref. 1870571 (Pure)/1870572 (Iron)/1870573 (Natural)/1870574 (Arctic)

**Situo® 5 RTS:**

Ref. 1870575 (Pure)/1870576 (Iron)/1870577 (Natural)/1870578 (Arctic)

1 or 5 channel RTS radio remote control making it possible to control one or several motors via a group control.

Dimensions	145 x 49 x 22 mm
Mounting	Optional wall mount



## ■ Situo 5 Variation RTS

Ref. 1811612 (Pure)

5 channel RTS radio remote control making it possible to control one or several motors as a group with precise adjustment of horizontal blind slats and sheer horizontal vanes.

Dimensions	145 x 49 x 22 mm
Mounting	Optional wall mount





## About Somfy

**SOMFY®** has been improving everyday life for more than 270 million people by designing and manufacturing intelligent motorization solutions for interior window coverings and exterior solar protections. Somfy innovates to automate and connect shades, blinds, draperies, awnings, rolling shutters, exterior screens & pergolas for commercial and residential buildings in 58 countries across the globe. With 170+ million motors produced over the last half century, Somfy is committed to creating reliable and sustainable solutions that promote the best way of living and well-being for all.

### **SOMFY SYSTEMS INC SOMFY NORTH AMERICAN HEADQUARTERS**

121 Herrod Blvd.  
Dayton, NJ 08810  
T: (800) 22-SOMFY (76639)  
NJ: (609) 395-1300  
F: (609) 395-1776

### **FLORIDA**

1200 SW 35th Ave.  
Boynton Beach, FL 33426  
T: (800) 22-SOMFY (76639)  
F: (561) 995-7502

### **CALIFORNIA**

15301 Barranca Parkway  
Irvine, CA 92618-2201  
T: (800) 22-SOMFY (76639)  
F: (949) 727-3775

### **SOMFY ULC**

#### **SOMFY Canada Division**

5178 Everest Drive  
Mississauga, Ontario L4W2R4  
T: 1-800-66-SOMFY (76639)  
CN: (905) 564-6446  
F: (905) 238-1491

[www.somfypro.com](http://www.somfypro.com)

A BRAND OF **SOMFY®** GROUP

